



The Pokémon Company



A NEW AND WILD POKÉMON ADVENTURE!





CONTENTS

Explore the Galar region	4
Travel through the Wild Area	4
Who will you choose?	5
The Legendary Pokémon of Galar	5
Your epic journey starts here!	6
Meet Professor Magnolia	6
Make friends along the way!	6
Battle new friends and rivals alike!	7
Each game has exclusive Gym Leaders for you to challenge	7
Build your team	8
Know your types!	8
Newly discovered Galarian forms	9
The Dynamax and Gigantamax phenomena	9
Participate in Max Raid Battles	9
Strive to become Galar's Champion!	10
Make your own League Card	10
The Battle Stadium	10
Poké Jobs	10
Play in your Pokémon Camp!	11
Travel in style!	11
The wild adventure continues!	12
More Pokémon and customisation options to discover	13
New clothing items	13
Welcome to the Isle of Armor	14
Ready to train hard!	14
New characters	15
Meet Kubfu & Urshifu	16
G-Max Partner Pokémon!	17
Welcome to the Crown Tundra	18
Discover the mysteries of Calyrex	19
Explore Pokémon Dens in co-op	19

Welcome to the amazing world of Pokémon!

Pokémon games are a series of role-playing games taking place in vast worlds, inhabited by mysterious creatures called Pokémon. There are hundreds of them, and they come in all shapes and sizes!



Explore the Galar region

Get ready to discover Galar, an expansive region with diverse environments, from a peaceful countryside and contemporary cities to a thick forest and snow-covered mountains.

The people and Pokémon who live here work together closely to develop the industries within it.

Travel through the Wild Area



There is a vast expanse of land in the Galar region which is known as the Wild Area. You'll find a greater variety of Pokémon living here than anywhere else in Galar. The Pokémon you'll run into will change depending on things like the weather or location, so you might see something new each time you visit!



Who will you choose?

You will begin your adventure with one of these three Pokémon:



Grookey
Type: Grass

A mischievous Chimp Pokémon that is full of boundless curiosity.



Scorbunny
Type: Fire

A Rabbit Pokémon that is always running about, bursting with energy.



Sobble
Type: Water

A somewhat timid Water Lizard Pokémon that shoots out attacks as it hides itself in the water.

The Legendary Pokémon of Galar!

Zacian

Zacian attacks so gracefully that its movements can even captivate its opponents. It holds what appears to be a sword in its mouth.



Zamazenta

Zamazenta's regal and majestic movements overwhelm any opponents that dare face it. Its body is covered in what seems to be a shield.



Your epic journey starts here!

As a Pokémon Trainer, you will embark on a whole new adventure filled with excitement and challenges to become the Champion.

Meet Professor Magnolia

Professor Magnolia is the preeminent Pokémon Professor of the Galar region. Her main focus of research has been the Dynamax phenomenon.



Make friends along the way!



Hop



Leon



Sonia

Leon is the current Champion of the Galar region and has never been defeated in an official Pokémon battle. He has a little brother named Hop, who will become your best friend – and also your rival! Sonia is Leon's childhood friend and granddaughter of Professor Magnolia, who'll aid you throughout your adventure.

Battle new friends and rivals alike!

Bede

Bede is one of your rivals who is skilled at Pokémon battles! While he's clearly aiming to become Champion, he seems to have other objectives as well...



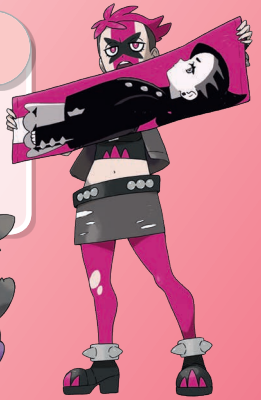
Marnie

Together with her partner Morpeko, she aims to become the Champion of the Galar region. She has many passionate fans, thanks to her sense of style and calculated battle strategies.



Team Yell

They want nothing more than for Marnie to become Champion – and even try to obstruct other Trainers!



Each game has exclusive Gym Leaders for you to challenge

Test your skills against Bea in *Pokémon Sword*...



...or face Allister in *Pokémon Shield*!



Build your team

Catch Pokémon...

Encounter wild Pokémon in places like tall grass, dark caves, or even the sea!



Train them by battling as a team...

Your Pokémon gain experience by defeating other Pokémon in battles! You can battle wild Pokémon and other Trainers to train your team up!

Battle Pokémon to lower their HP, and throw a Poké Ball to catch them.



...and evolve them!

Some Pokémon can evolve when gaining enough experience in battle. They learn new moves and become more powerful!



Know your types!

There are over a dozen different types of Pokémon. Certain types are stronger against others! Pokémon also have abilities that can have special effects or grant bonuses when in battle!

Here are some examples of Pokémon you'll encounter:



Gossifleur
Type: Grass



Wooloo
Type: Normal



Corviknight
Type: Flying/Steel



Alcremie
Type: Fairy



Yamper
Type: Electric



Rolycoly
Type: Rock



Drednaw
Type: Water/Rock



Duraludon
Type: Steel/Dragon

The newly discovered Galarian form Pokémon



Certain Pokémon have adapted to the unique environment of one specific region and look different than the same species might look when found in another region.

The Galar region has its own regional forms of Pokémon, known as Galarian forms!



Pokémon become huge with Dynamaxing and Gigantamaxing!

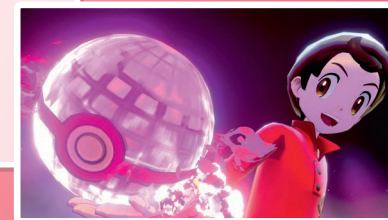
Dynamax and Gigantamax are phenomena unique to specific locations in the Galar region, where Pokémon are able to take on gigantic appearances.



Dynamax Pokémon don't just become bigger - they get a boost in power as well. Gigantamax Pokémon can even use an exclusive, unique move known as a G-Max Move!

Participate in Max Raid Battles with other Trainers

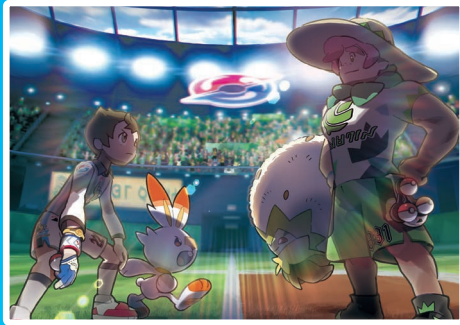
Max Raid Battles are a completely new battle format where you will team up with three other Trainers in order to take on a wild Dynamax Pokémon. You'll get a chance to catch the wild Dynamax Pokémon that you face if you manage to defeat it.



But don't get too confident. The wild Dynamax Pokémon will remain in their giant form for the entire battle and have other unique powers to boot.

They won't go down easily!

Strive to become Galar's Champion!



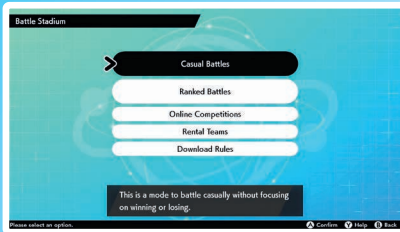
Here in the Galar region, where Pokémon battles are big entertainment, the region's Pokémon League holds tournaments to decide the next Champion. You'll have to compete with your rivals and challenge the Gym Leaders of the region for your chance to take part in this tournament, too!

Make your own League Card



Pokémon Trainers in the Galar region create League Cards for themselves that provide detailed Information about them. League Cards can be traded with other players and Trainers across Galar, so try to make one that's really unique!

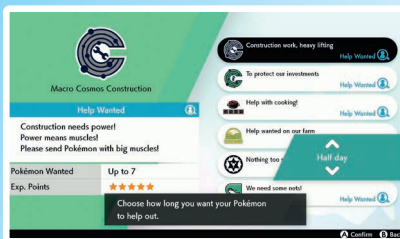
The Battle Stadium



You can connect to the internet and battle against Trainers from all over the world in the Battle Stadium. Features like Rental Teams and Online Competitions also allow for different ways to connect to other Pokémon Trainers.

Note: A Nintendo Switch Online membership (paid) is required to use the Battle Stadium. There is no need to set up a Pokémon Global Link account.

Poké Jobs



In the Galar region, it's very common for people and Pokémon to work together. Many cooperations and universities request the help of Pokémon through what are known as Poké Jobs. By carrying out Poké Jobs, your Pokémon will gain experience points – and you'll even find that certain Pokémon types are suited for specific Poké Jobs!

Play with Pokémon in your Pokémon Camp!

Watch your Pokémon closely as they have fun camping, and as they play together, you might discover a new side to them that you don't normally get to see!



In your Pokémon Camp, you'll be able to make wondrous curries that are hugely popular in the Galar region! Curry is a dish with tons of variety.

Pour your heart into cooking and create a delicious plate of curry!

Travel in style!

As you travel, you'll come across boutiques and hair salons. By visiting them, you can buy new clothes for yourself or change your hairstyle to freshen things up!



Boutiques always have a wide selection of items, and they'll be your go-to spots for trying on and buying new clothes. Boutiques in different towns and cities have different items for sale!



Salons let you choose your haircut and hair colour, style your eyebrows, or even swap out your colour contacts!

THE WILD ADVENTURE CONTINUES!



Two sets of additional paid downloadable content that continue your *Pokémon Sword* or *Pokémon Shield* adventure.

June 2020

The Isle of Armor

Part 1

- A NEW AREA, THE ISLE OF ARMOR
- NEW POKÉMON
- CLOTHING ITEMS
- HANDY FEATURES, ITEMS, AND MORE

Autumn 2020

The Crown Tundra

Part 2

- A NEW AREA, THE CROWN TUNDRA
- NEW POKÉMON
- NEW CO-OP PLAY FEATURE
- CLOTHING ITEMS AND MORE

More Pokémon and customisation options to discover

POKÉMON THAT DIDN'T APPEAR IN *POKÉMON SWORD* AND *POKÉMON SHIELD* WILL BE DISCOVERABLE

Many Pokémon that didn't appear in *Pokémon Sword* and *Pokémon Shield* have made the *Isle of Armor* and the *Crown Tundra* their homes. Get ready to encounter a diversity of Pokémon, from newly discovered Legendary Pokémon and regional forms, to familiar Pokémon that have been spotted in Galar!

The Isle of Armor



The Crown Tundra



New clothing items

Over 100 new clothing items will be added in the *Isle of Armor* and the *Crown Tundra* expansions. Spice up your adventure by changing your look!

Part 1



The Isle of Armor

In this expansion, you'll head to the *Isle of Armor*, the setting of your new adventure in the Galar region. The *Isle of Armor* is a giant island full of environments not seen in Galar before – you'll find wave-swept beaches, forests, bogs, caves, and sand dunes!

Take on an apprenticeship under the former Galar Champion, who's also the mentor of Champion Leon!

Meet new rivals, hone your skills and master new fighting styles.



Ready to train hard!

You'll be ready to face any challenge thanks to your new training gear. It's a special outfit that's sure to get you ready in both body and mind for your upcoming journey!



Mustard

Mustard will appear in the *Isle of Armor* and will be responsible for your training. He's a legendary Trainer who held the seat of Champion for an astounding 18 years, back before Dynamaxing was incorporated into the battles of the Pokémon League. His record has yet to be beaten!

In fact, Champion Leon himself trained under Mustard, which is how his latent talent was recognised!



There are two new rival Trainers that appear in the *Isle of Armor*, specialising in Poison-type Pokémon and Psychic-type Pokémon respectively! They're training hard so that they can someday set up a Gym and Stadium for their own type! You'll face a different rival depending on which game you're playing.



Klara

Klara specialises in Poison-type Pokémon and trains hard at Mustard's dojo. She'll do just about anything to appear adorable and cute, as popularity is what she admires most of all. She goes about her days with a smile on her face, but hiding behind it is a calculating nature that she puts to very good use.



Avery

Avery is one of the Trainers who strive to become stronger at Mustard's dojo, and he is a proficient user of Psychic-type Pokémon. He is gentlemanly and well-mannered but also very proud. And it seems that he'll see you as a particularly formidable rival!



Meet Kubfu & Urshifu

Kubfu

A serious Pokémon dedicated to its training

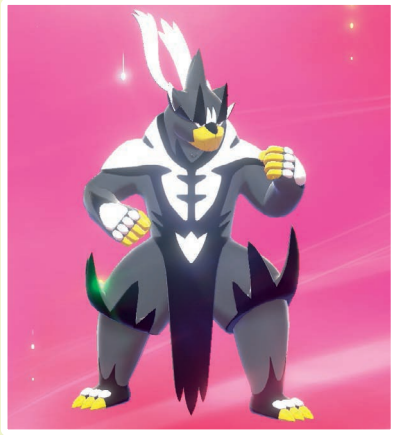
This Pokémon isn't normally found in the Galar region – rather, the Kubfu you meet comes from a faraway land! You'll train alongside Kubfu, honing your skills together!

This Pokémon is hardworking and strives to train both its body and mind. It uses each defeat as motivation, training itself with even more vigour after a loss in order to grow stronger.

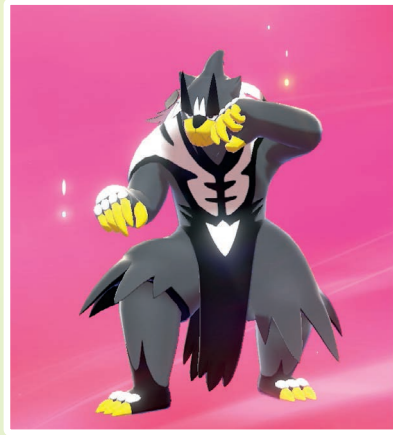


Urshifu

Kubfu will evolve into Urshifu after it has undergone sufficient training. It seems that Urshifu has two forms – a Single Strike Style and a Rapid Strike Style – and it appears that each form is different in Pokémon type!



URSHIFU
(SINGLE STRIKE STYLE)
Fighting/Dark



URSHIFU
(RAPID STRIKE STYLE)
Fighting/Water

Note: Kubfu will evolve into either Single Strike Style Urshifu or Rapid Strike Style Urshifu. Which form it evolves into will change depending on choices made during your adventure. The forms are not tied to the game version you are playing.

G-Max Partner Pokémon!

The evolved form of your partner Pokémon – be it Rillaboom, Cinderace, or Inteleon – will gain a Gigantamax form as a reward for your adventure on the Isle of Armor.



New Move:

G-Max Drum Solo



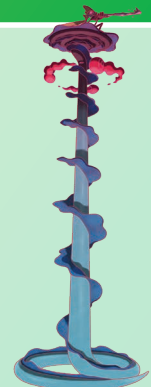
New Move:

G-Max Fireball



New Move:

G-Max Hydrosnipe



Welcome to the *Crown Tundra*

Part 2



A certain person will appoint you as the leader of their exploration team in the *Crown Tundra*. You'll then be tasked with investigating the reaches of this frozen land.

The *Crown Tundra* is a snow swept realm. In this frigid area, with its jagged winter mountains, people live in small communities where they support and rely on one another.

Make sure you are well equipped for this icy adventure!



Discover the mysteries of Calyrex

In the *Crown Tundra*, you'll experience the never-before-told story about the Legendary Pokémon Calyrex. Uncover the mysteries of Calyrex in the *Pokémon Sword* Expansion Pass and the *Pokémon Shield* Expansion Pass.

A noble leader

This Pokémon ruled over a part of Galar, including the *Crown Tundra*, in ancient times. Though it appears delicate and slight, its every move is filled with grace and dignity. It also has extremely high intelligence, and it's said to see every past, present, and future event.



Psychic/Grass

Explore Pokémon Dens in co-op

Remember the Pokémon Dens that you've only been able to get a glimpse of during Max Raid Battles? Well, now you'll be able to explore their full depths!



Discover them together with your friends in an all-new co-op mode!



The Pokémon Company **Nintendo**

A NEW AND WILD POKÉMON ADVENTURE!



OUT NOW!

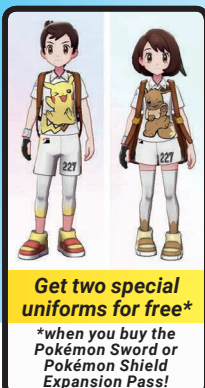
Available
June 2020

The Isle
of Armor



Available
Autumn 2020

The Crown
Tundra



Get two special
uniforms for free*

*when you buy the
Pokémon Sword or
Pokémon Shield
Expansion Pass!

THE NINTENDO SWITCH FAMILY OF CONSOLES

Nintendo Switch



3 MODES

TV / TABLETOP / HANDHELD

Nintendo Switch Lite



HANDHELD-DEDICATED

Now available for pre-order on
Nintendo eShop