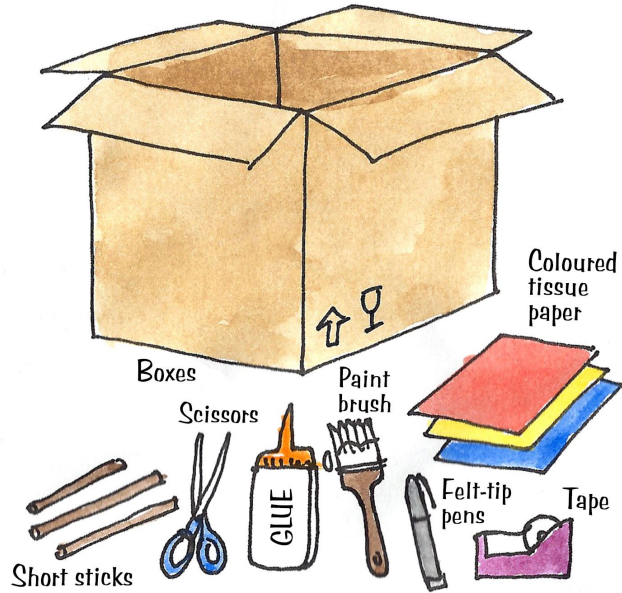
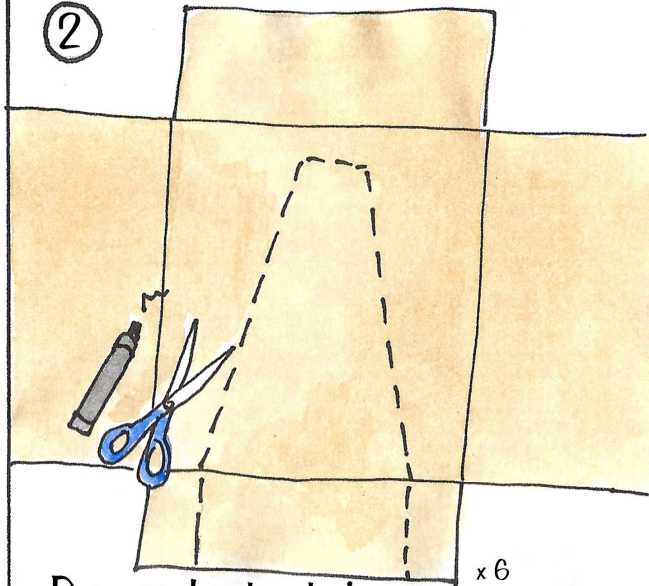


How to make a tepee

① What you'll need ...

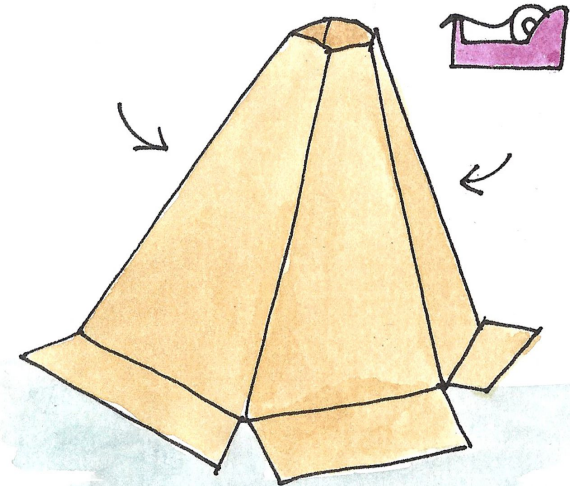


②

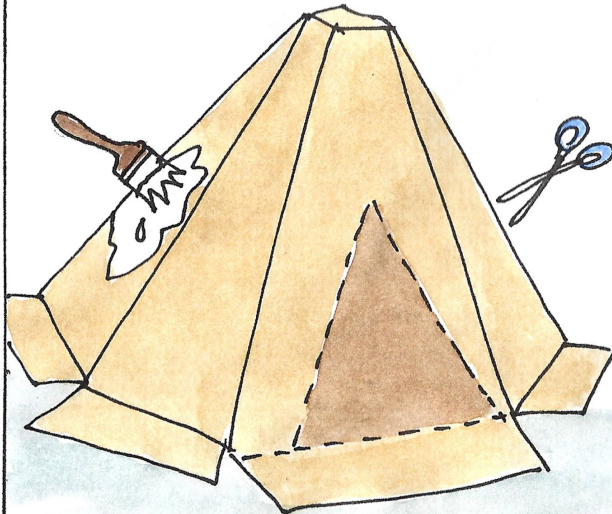


Draw and cut out six tepee panel shapes

③ Stick all the sides together to build the tepee

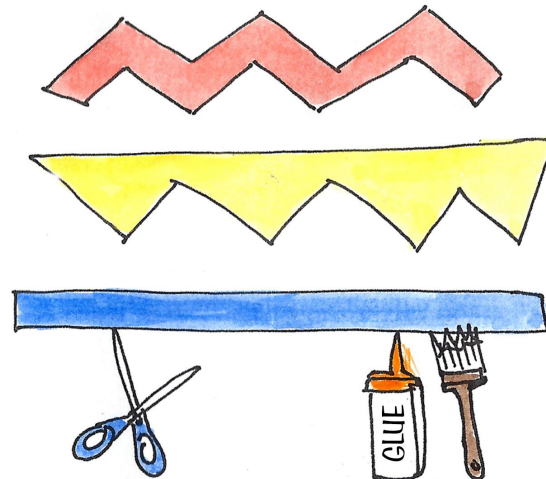


④ Cut out a triangular hole and paint the tepee

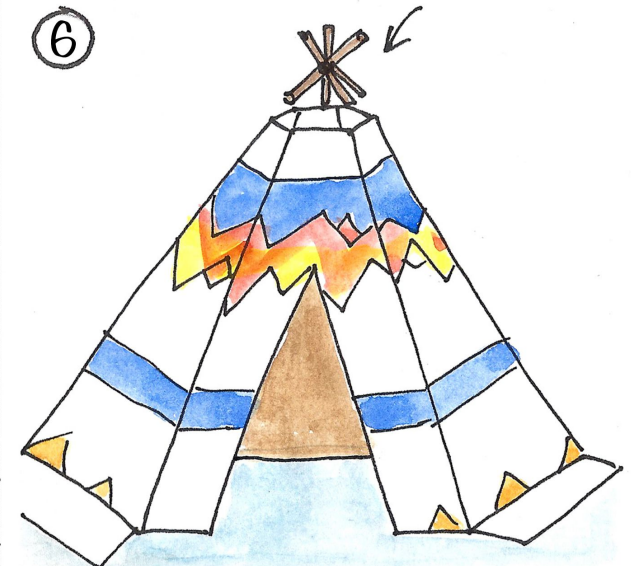


⑤ Create a découpage effect

Cut out shapes of tissue paper and overlay using PVA glue



⑥



Stick the tissue paper on the tepee and add the sticks to finish