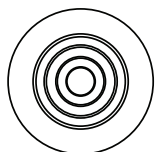
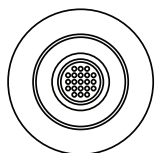


Rapide Wet Room Extractor Fans



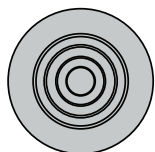
**Rapide Wet Room
Inline Fan - White**

Art no. 41800041570



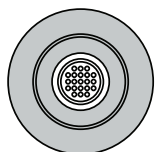
**Rapide Wet Room LED
Illuminated Inline Fan - White**

Art no. 41800041590



**Rapide Wet Room Inline
Fan - Chrome**

Art no. 41800041560



**Rapide Wet Room LED
Illuminated Inline Fan - Chrome**

Art no. 41800041580

Thank you for purchasing product.

Please read through these instructions carefully and refer back to them during installation to ensure that your product is fitted safely and that it retains its high quality finish.

Please retain this leaflet for future reference.

Before drilling, ensure there are no hidden cables or pipes in the wall

Suitable for installation in zones: 2 & Outside Zones

Please see Fig. 1 on the back page for details



In The Box

1. 1x Fascia
2. 1x LED Driver
(41800041580 & 41800041590 only)
3. 1x High powered Inline fan
4. 1x 3 metre flexible ducting (ø100mm)
5. 1x Brown external fixed grille
6. 4x Galvanized steel hose clamps
7. 1x Screw and dowels pack
8. 1x Plastic screwdriver
9. 1x Fitting instructions

Warning

The Rapide Wet Room LED Illuminated Inline Fans (41800041580 & 41800041590) are supplied with an MR16 3 Watt LED lamp. This is the only lamp suitable for use with this fan. **Exceeding the lamp wattage will invalidate the warranty.**

The fan must be connected to power mains through an automatic circuit breaker integrated into the fixed wiring system with the gap between the breaker contacts on all poles not less than 3mm. Check the fan for any visible damages of the impeller and the casing before starting installation. The casing internals must be free of any foreign objects which can damage the impeller blades. Misuse of the product or any unauthorized modification is not allowed.

Take steps to prevent ingress of smoke, carbon monoxide and other combustion products into the room through open chimney flues or other fire-protection devices. Sufficient air supply must be provided for proper combustion and exhaust of gases through the chimney of fuel burning equipment to prevent back drafting.

Please Note; The fan may operate immediately when connected, this is normal and due to a residual charge left in the capacitor during testing. Should this occur, switch off, adjust timer to desired setting then turn back on (see page 6 for Timer System).

Mounting - Fascia

1. Ceiling mounted ventilation should be ducted through the roof space, by ducting to an external soffit under the eaves or grille in the slope of your roof. *NB: Ducting installed between a floor and ceiling can only run between joists, not across them.*
2. Mark the position of the vent fascia with a pencil in a suitable position on the ceiling, making sure that it is between the joists. *(Please note that the fascia can be mounted in Zone 1, however all connections **MUST** be made outside zone - i.e. in the loft.)*
3. Drill a 9mm hole through the ceiling anywhere along the edge of the pencil line. Now cut out the hole with a pad saw.
4. Hold the vent fascia against the ceiling and mark the position of the fixing holes. Fix the unit in place using suitable heavy duty plasterboard fixings (not supplied).
5. Attach flexible ducting with the metal hose clamps. Ensure that the ducting has a smooth flow towards the motor body to minimise air resistance. Follow a similar procedure for the outside wall grille. *Extra ducting may be used to extend the distance to the external grille but performance will be reduced.*

Mounting - Fan unit

1. Install the Rapide Inline fan within the loft or ceiling space (ensuring correct direction of air flow using arrows on the fan). **DO NOT COVER motor or LED driver with loft insulation.** The fan is suitable for **only** horizontal mounting on a wall (fig. A) or a floor (fig. B). When mounting the fan

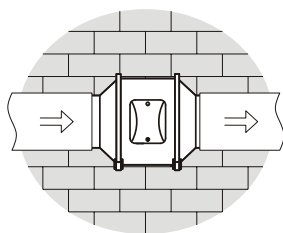


fig. A horizontal on a wall

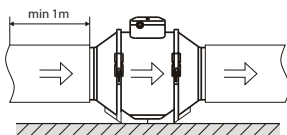
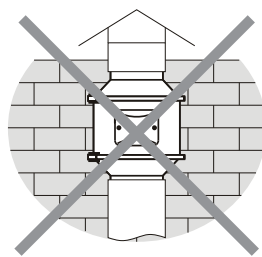
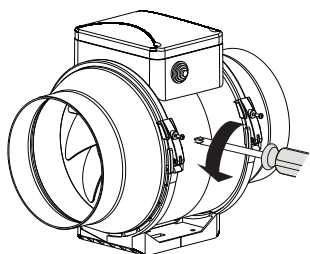


fig. B horizontal on a floor

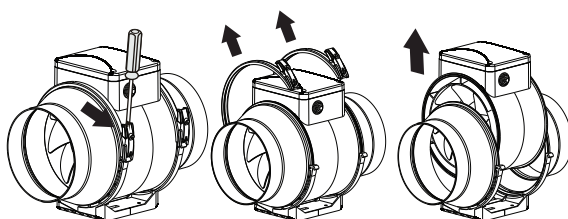


Do not mount vertically

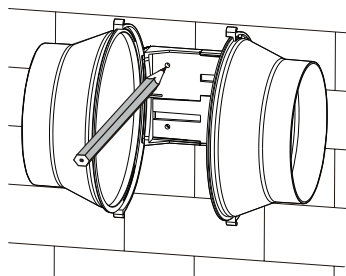
2. Using a screw driver, remove screws on clips.



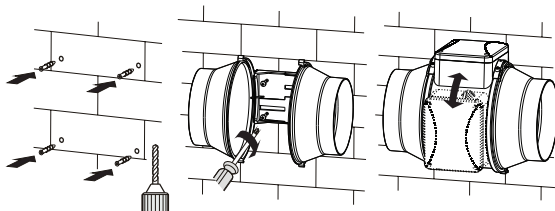
3. Remove bracing clips & remove central unit.



- Place frame in desired location and mark fixing holes.



- Fix frame to desired surface, using fixings suitable for wall type. Then replace central unit and bracing clips.



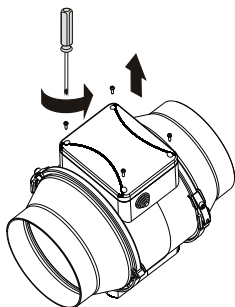
- Connect the flexible ducting to both sides of the Inline fan with the metal hose clamps. Ensure there is a minimum of 1m straight ducting between fascia and fan.

Electrical Connection

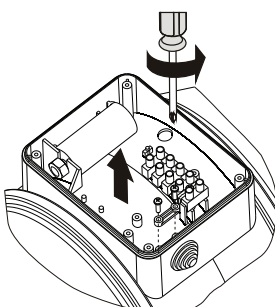
Ensure the mains power supply to which the fan is being connected is turned off.

This product is designed to be connected to the domestic lighting circuit and switched by means of the bathroom's light switch.

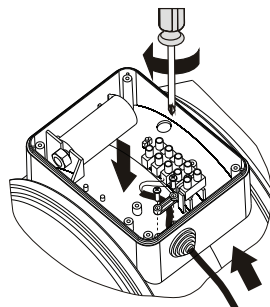
- Using a screw driver, remove cover.



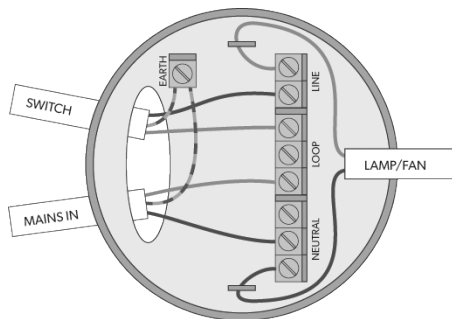
- Using a screw driver, remove cable grip.



- Feed cable through hole & replace grip.



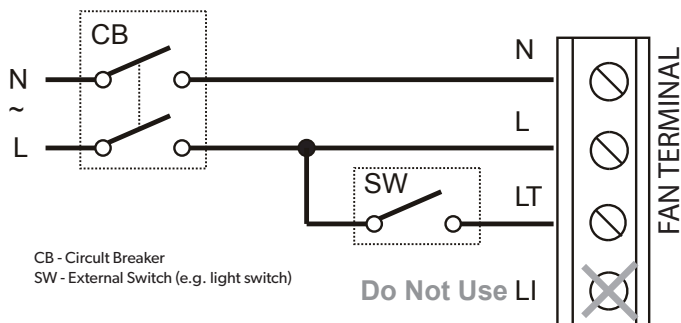
4. Wire the fan as per fig. C below. **The feeds for this fan can be found in the bathroom ceiling rose or light fitting.**



LINE = This is the terminal that is only live when the switch is on (LT)

LOOP = This is the terminal that is permanently live (L)

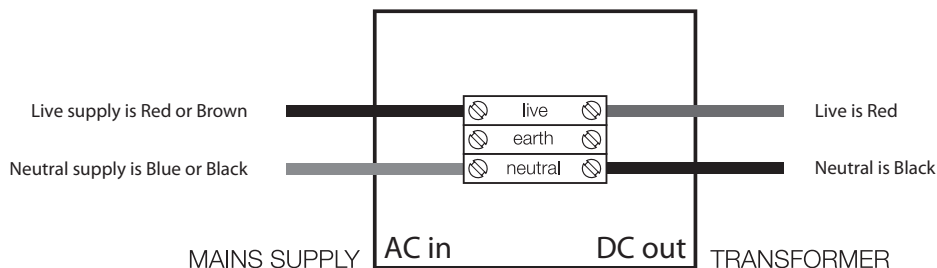
NEUTRAL = This is the terminal that is always neutral (N)



5. Amend the timer setting, if desired, following the process on page 6. Replace cover using a suitable screw driver.
6. On Illuminated versions (41800041580 & 41800041590) the mains supply should be connected to the LED driver as per the wiring diagram for lamp (Fig. D).
7. Fix the external grille to the soffit in the same way as the ceiling fascia with 4 screws.
8. For illuminated Rapide vents, follow the wiring diagram below (Fig. D).

Wiring Diagram For Lamp

(41800041580 & 41800041590 only)



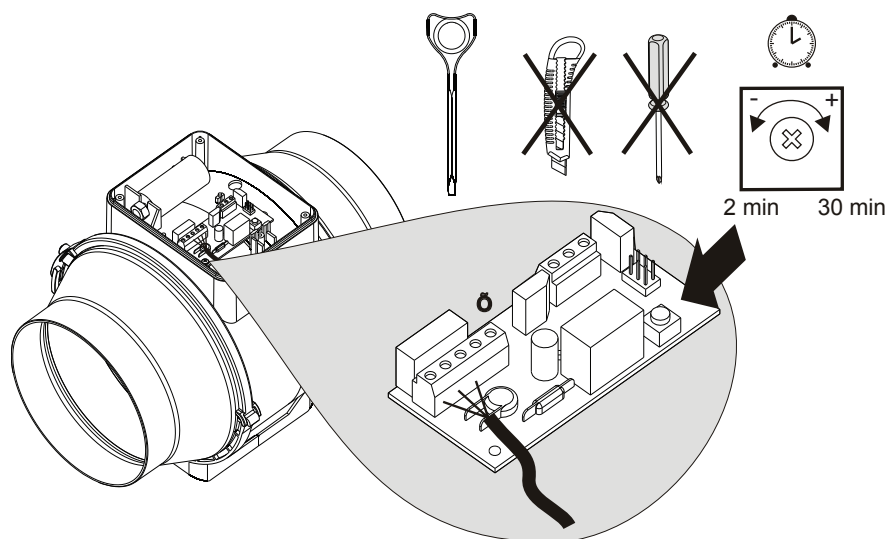


Timer System

Warning! The timer circuit is under mains voltage. Ensure mains power supply is switched off before making any adjustments.

The fan is operational after the control voltage is supplied by the external switch (e.g., by the light switch) to the input terminal LT. After the fan is switched off the fan continues to operate within the timer period set by the timer from 2 to 30 minutes. To adjust the run on timer, rotate the control knob clockwise to increase and anti-clockwise to decrease the off-delay time respectively (see below diagram). Please note the adjustment should only be done without the fan running.

The set includes a specially designed plastic screwdriver for timer setting adjustments. Only use the plastic screwdriver to alter the turn-off delay time. Do not use a screwdriver, knife, etc. for adjustments so as not to damage the circuit board.



Operation

The fan is rated for connection to single-phase AC220-240 V / 50/60 Hz power mains. The fan is designed for continuous operation always connected to mains power. Air motion direction in the system must match the pointer on the fan casing. Ingress protection rating IPX4.

Maintenance

Fan maintenance is to be performed only after the fan is disconnected from the mains power supply. Maintenance means periodic cleaning of the surface of dust and dirt.

All surfaces should be cleaned with diluted detergent, i.e. washing up liquid, and a soft cloth. Scourers and scouring agents should not be used, as these may cause damage to the surface of the product.

Avoid water dripping on the electric components. Wipe the surfaces dry after cleaning.

Technical Information

Power Input: 220-240V, 50/60Hz

Maximum Ventilation Volume: 210 m³/hr (±5%) / 58.333 Litres Per Second

Power Consumption: 25W + 3W LED Lamp (41800041580 & 41800041590 only)

Decibel: 32dB

Dimensions: Ø14 x D7.3cm



These products are suitable for installation in zones: **1 & Outside Zones***

All installations must comply with guidelines which are based on a zonal concept. The diagram above illustrates this concept and must be followed to ensure the safe installation of electrical appliances in the bathroom. These regulations apply to domestic installations only. Installations must be made in accordance with the current IEE wiring regulations and relevant building regulations. **It is recommended that all electrical bathroom products should only be fitted by a suitably qualified, Part P registered electrician.** *Please refer to point 2 of the Fascia mounting guidelines.

Electrical Safety Information

Ensure mains power supply is switched off before starting installation. Before drilling, ensure there are no hidden cables or pipes in the wall.

Care Instructions

Do not use abrasives or solvents when cleaning this product.

Wipe off all water spillages as soon as possible using a soft, damp cloth.



WEEE compliance

Must not be mixed with general household waste