

## Savoy, Myplan, Alpine and Alpine Duo Bath Panel Installation Instructions

There are a number of ways of installing bath panels. We recommend framing the bath and using Velcro to attach the panels to the frame. This method allows the panel to be fixed without visible fixings, it can compensate for any slight bows in the panel, and can be removed if access is required under the bath for servicing.

### The following will help you install your bath panels:

Tools Required: Drill and Drill Bits, Hand Saw, Screwdriver

You also need the following materials: Silicone Sealant, wall fixings and screws, 50mm timber for framing, Velcro pads

### Plan the installation:

Measure the height of the underside of the bath rim from the floor. Also measure the height of the bath panel, ensure proper installation clearance for the panel.

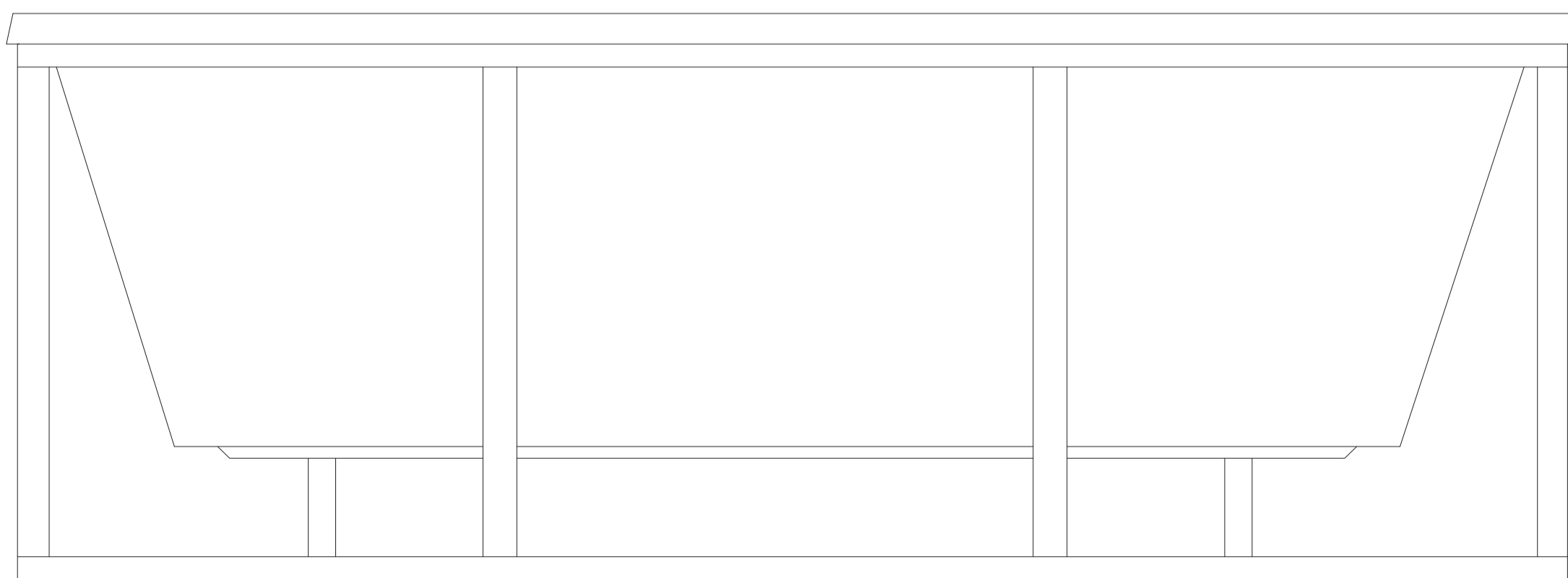
Check whether the floor is level. You may need to cut the bottom of the panels to match the shape of the floor.

Read these instructions before starting.

### Construct the frame

Frame your bath using 50mm square timbers. Note that some baths have narrow ledges, e.g. Showertime, so thinner timber may be required for the top section of the frame.

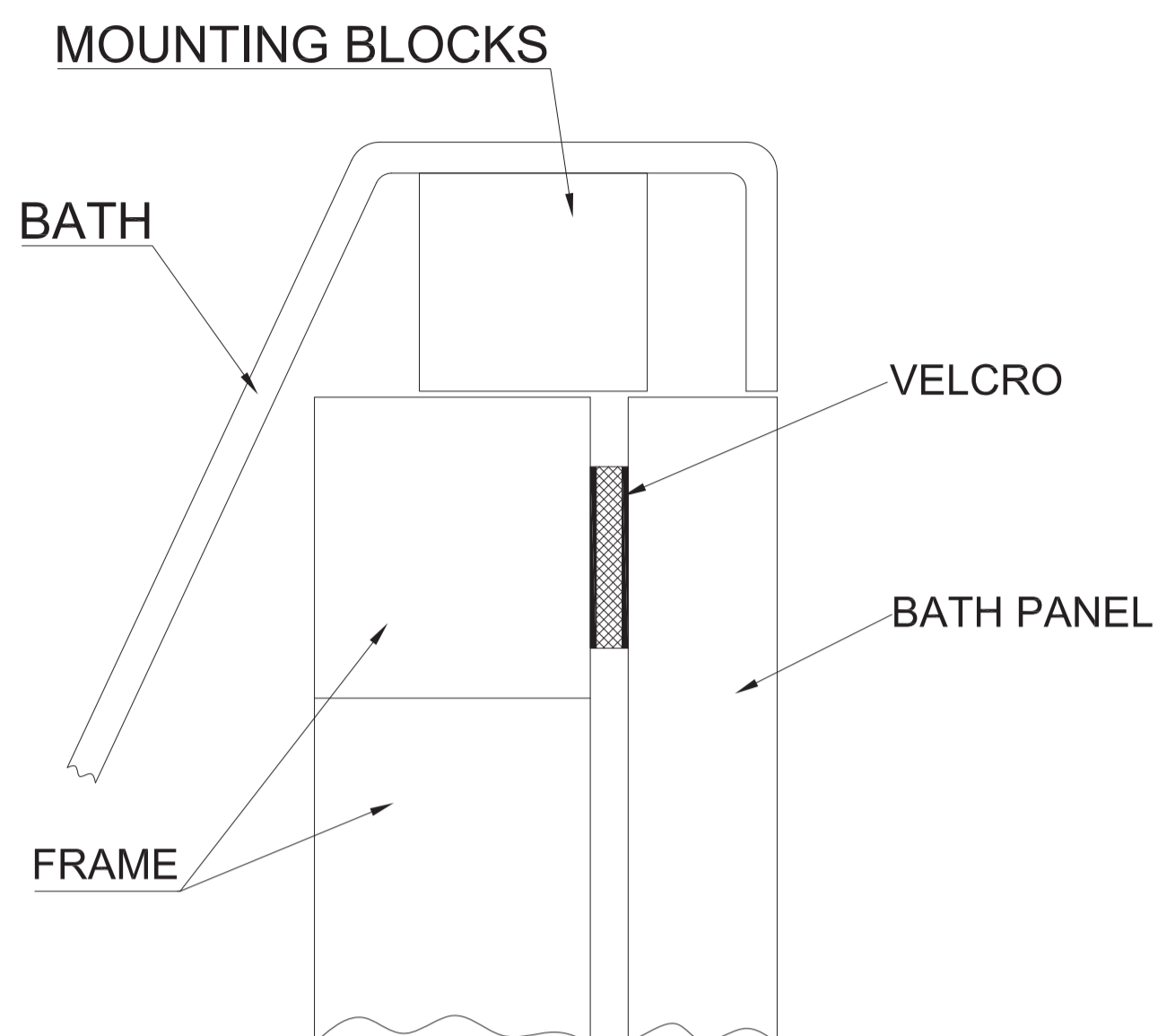
There should be at least one intermediate vertical along the side frame so that the bath panel can be held in at least one point in the middle.



- **Alpine Duo units have protective film on the front and side panels, please remove this film after installation.**

The frame should not support the bath as the weight of bathstore acrylic baths is designed to be taken by the legs.

It should be inset from the outside lip of the bath by the thickness of the panel and the thickness of the velcro pads. Check the thickness of your bath panel as different panels are different thicknesses.



## Sizing the panels

If necessary, trim the lower edge of the panels to compensate for any unevenness of the floor.

Panels may also need to be cut to fit around skirting boards or pipes.

The length may be reduced, and if so preferably at the wall end to conceal the cut edge.

Any cut edges should be completely sealed before fitting.

Note that the front panel is intended to overfly the end panel if one is used.

## Fitting the panels

Apply the Velcro pads equally spaced around the frame, peel off the backing of the outward facing pads and push the panels into place.

Apply silicone sealant to the edges to prevent water penetrating the panels

Allow 24 hours for the silicone to cure before using the bathroom

## Care and maintenance

Our furniture coordinated bath panels are made from wood. The panels have a water resistant finish, but are not intended to remain wet for long periods. The quality of the finish is best maintained if wiped dry after use.

The panels should only be cleaned using a soft damp cloth followed by a dry one. Do not use chemical cleaners or abrasives as these will damage the surface.

If the panels are removed for any reason remember to re seal with silicone