

SAFETY WARNINGS

- ✓ Handle product with care.
- ✓ When drilling walls, check first for hidden pipes and cables.
- ✓ Use safety eyewear when drilling.
- ✓ Keep all small parts away from children.
- ✓ If the product is over 20 kg (see packaging), 2 people are required to carry and install the unit.

IMPORTANT NOTES

Ensure all cut outs for plumbing are carried out prior to installation.

Check all product contents and read instructions before starting installation.

Please see our website www.bathstore.com for assistance.

GUARANTEE

We have taken great care to ensure that this product reaches you in perfect condition. However should any parts be damaged or missing, please see our website www.bathstore.com for assistance. This does not affect your statutory rights.

CARE AND MAINTENANCE

This furniture is made of wood products. It should be wiped dry after use and should not be allowed to remain wet for long periods. Clean using a mild detergent and a soft cloth only. Do not use chemical or abrasive cleaners.

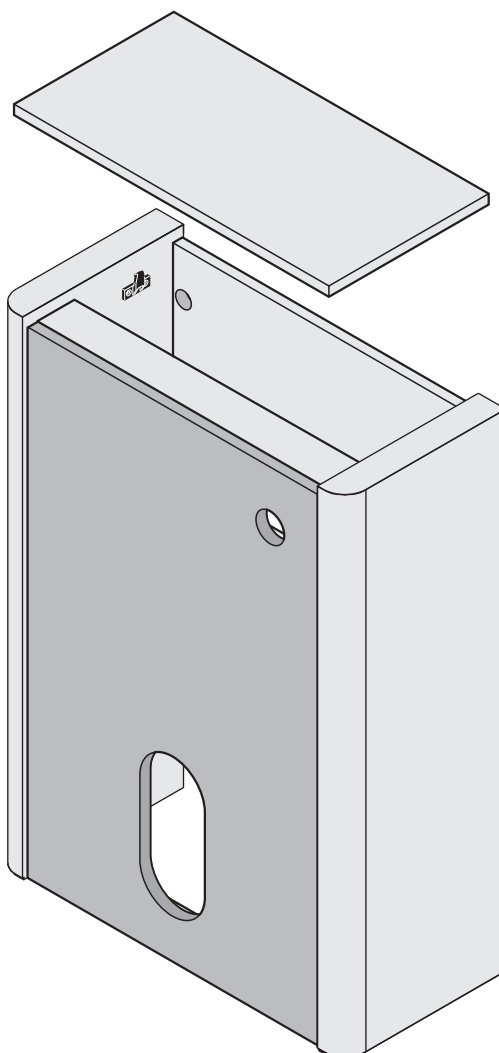
Tools Required (Not Included)

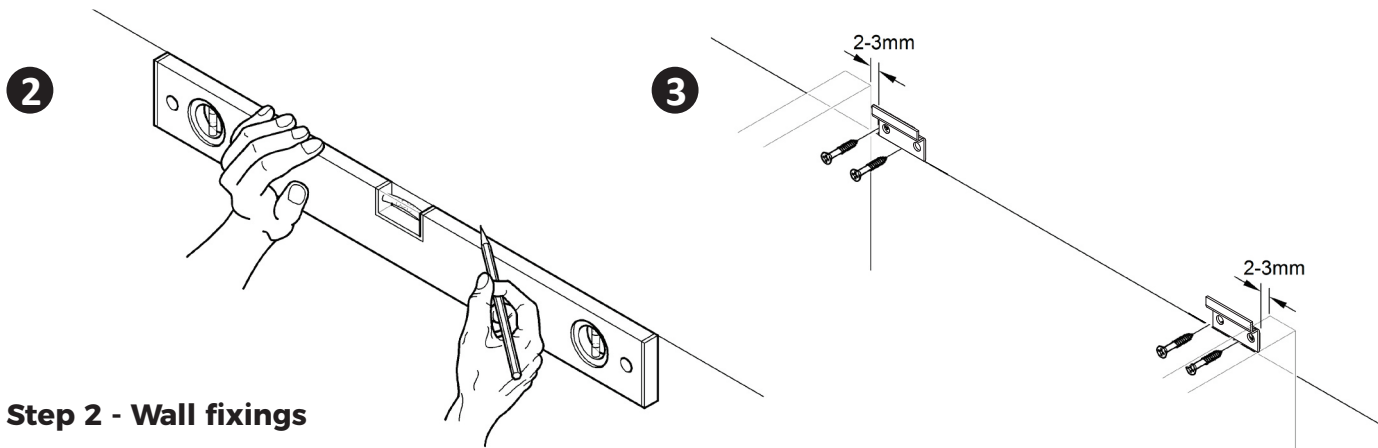
- | | |
|--|----------------|
| ✓ Pozidrive Screwdriver | ✓ Hammer |
| ✓ Pencil | ✓ Tape Measure |
| ✓ 2.5mm & 5mm Drill Bits or as compatible with alternative fixings for the wall structure. | ✓ Power Drill |
| | ✓ Spirit Level |

Fittings and Parts Supplied

- 2 x Wall Plates
- 4 x Screws
- 4 x Wall Plugs

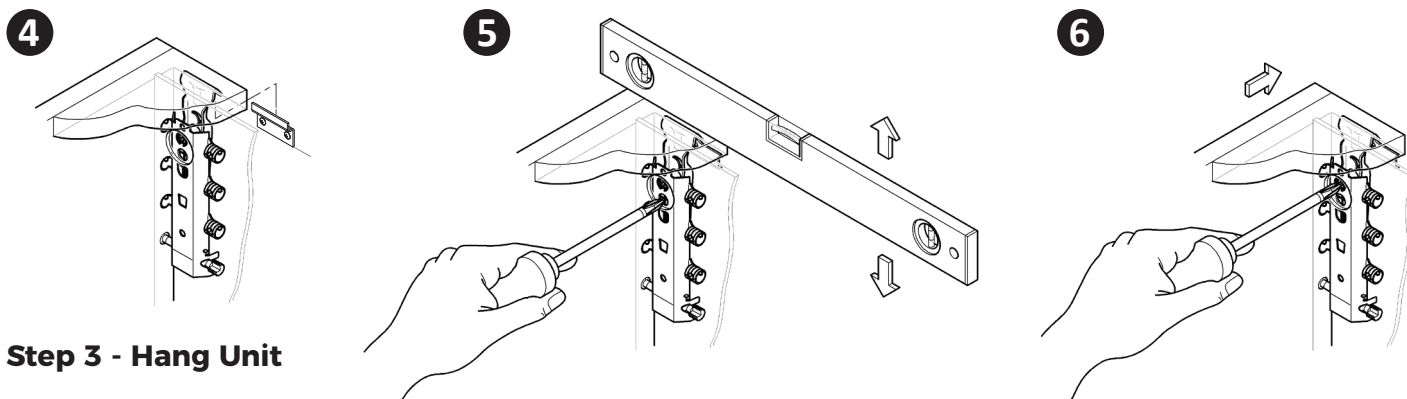
1 Step 1 - Remove the Top Panel





Step 2 - Wall fixings

- ✓ Measure the height of the WC Unit and use a spirit level to draw a horizontal line to work to (1).
- ✓ Mark out the internal dimensions of the unit making sure the plates will be within the internal dimensions of the unit by 2-3 mm.
- ✓ Drill the fixing holes with a Power Drill and use the Wall Plugs and Screws provided to fix the plates in position.
- ✓ If the wall is not a solid wall, you will need to use different fixings suitable for the wall type. Ensure that they are adequate to support the total weight of the unit as stated on the packaging.



Step 3 - Hang Unit

- ✓ Hang the unit on the wall mounting plates (3).
- ✓ Use a spirit level to level the unit by adjusting the lower screw on the hanging bracket (4).
- ✓ Once level, adjust the upper screw on the hanging bracket to tighten the unit to the wall (5).
- ✓ Replace the cover cap (6).

7 Step 1 - Replace the Top Panel

