

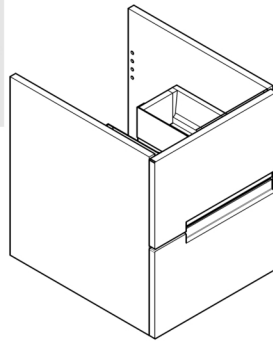
Vermont Wall Mounted Vanity (2 Drawer)

IMPORTANT NOTE

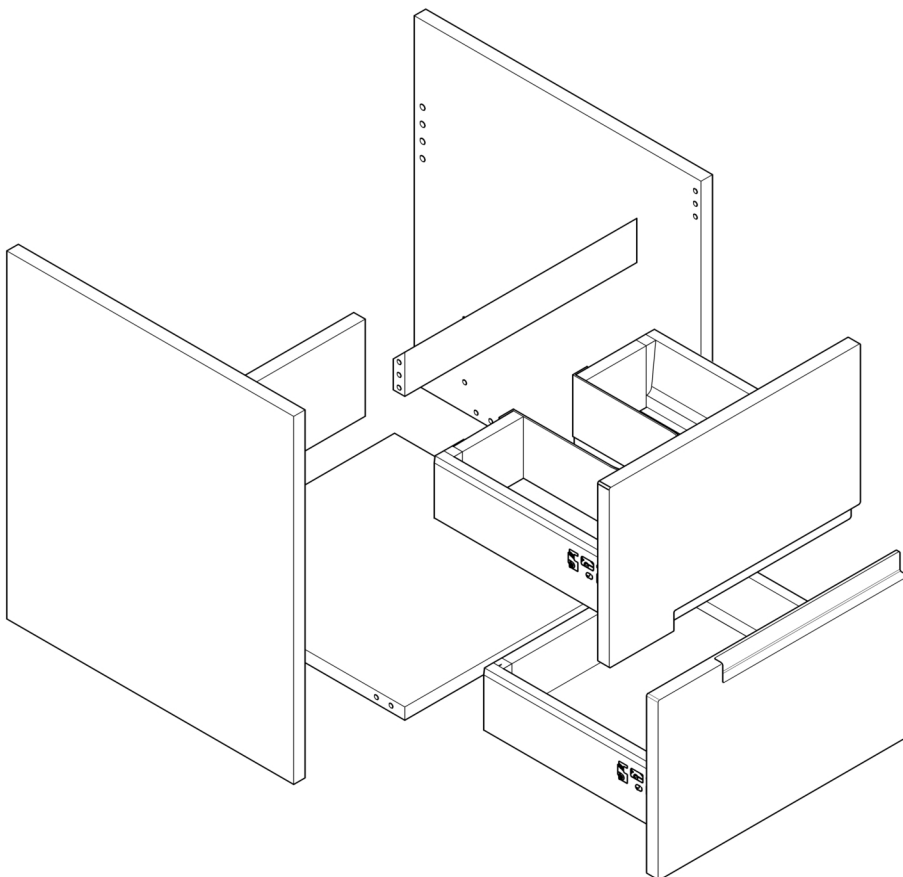
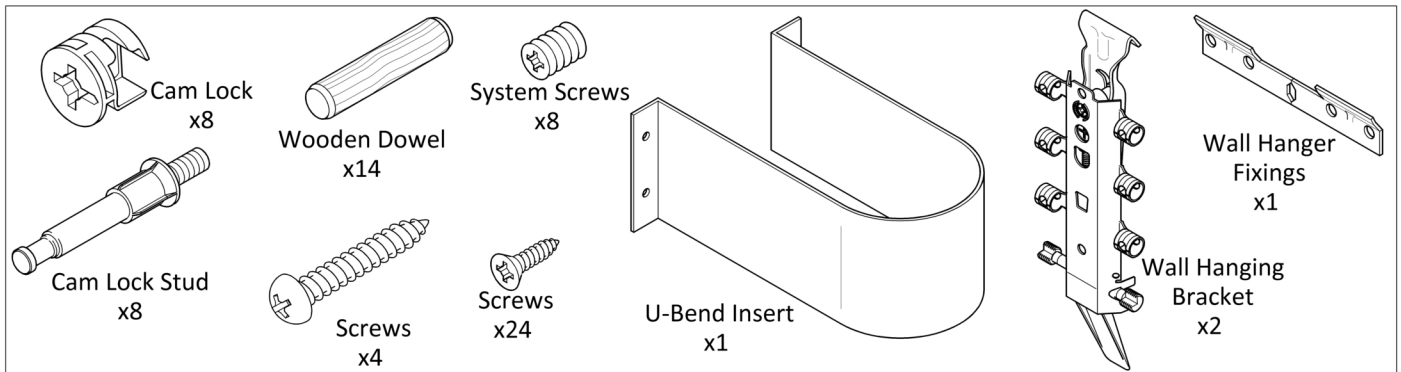
Check all product contents and read instructions before starting installation.

SAFETY WARNINGS

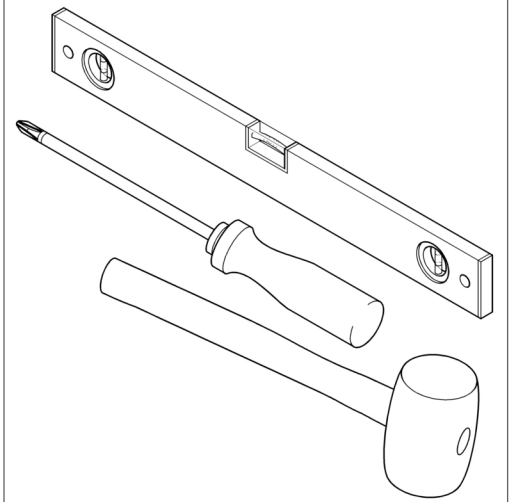
Handle product with care
Keep all small parts away from children
If product is above 20kg (see packaging)
it requires 2 people to carry & install it

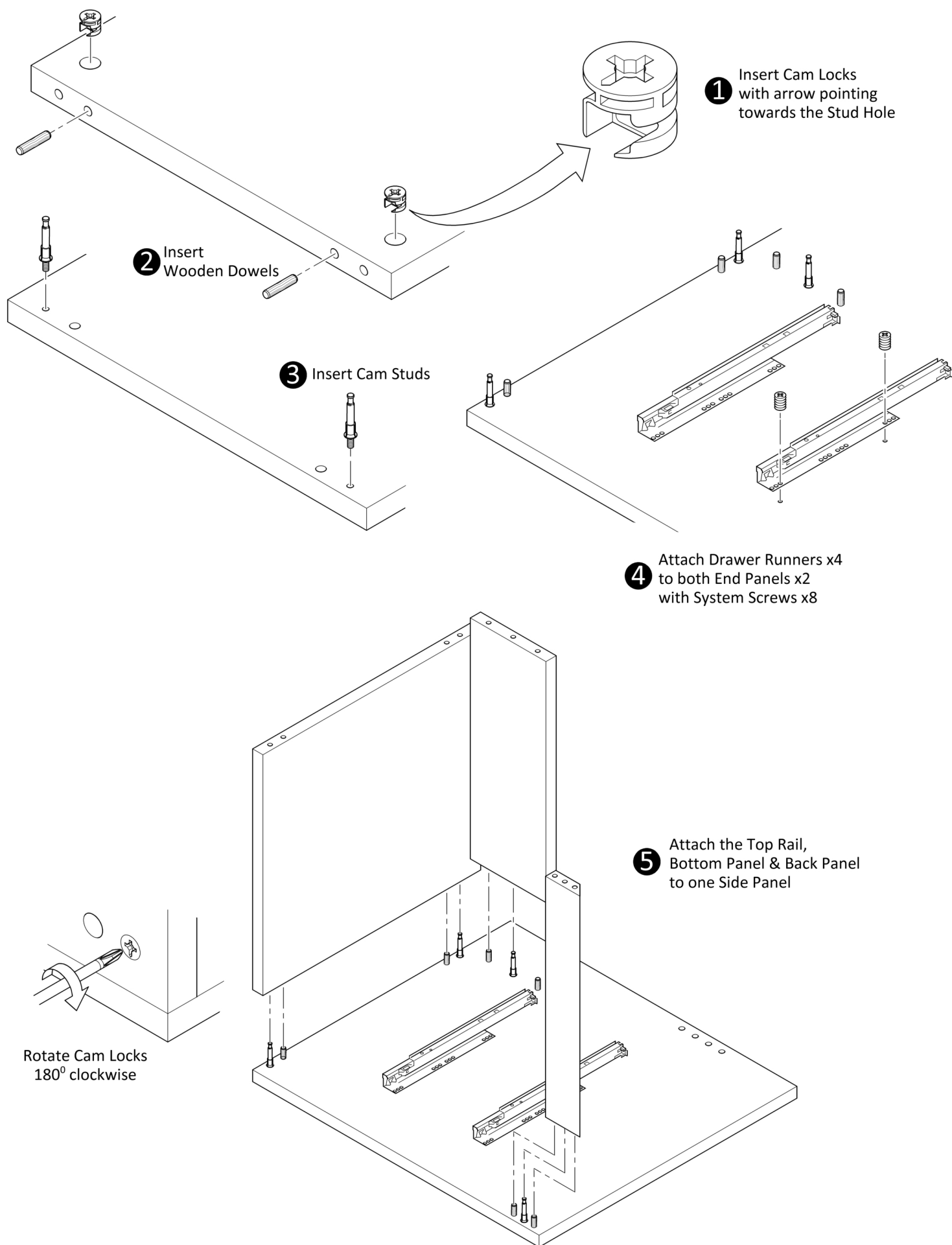


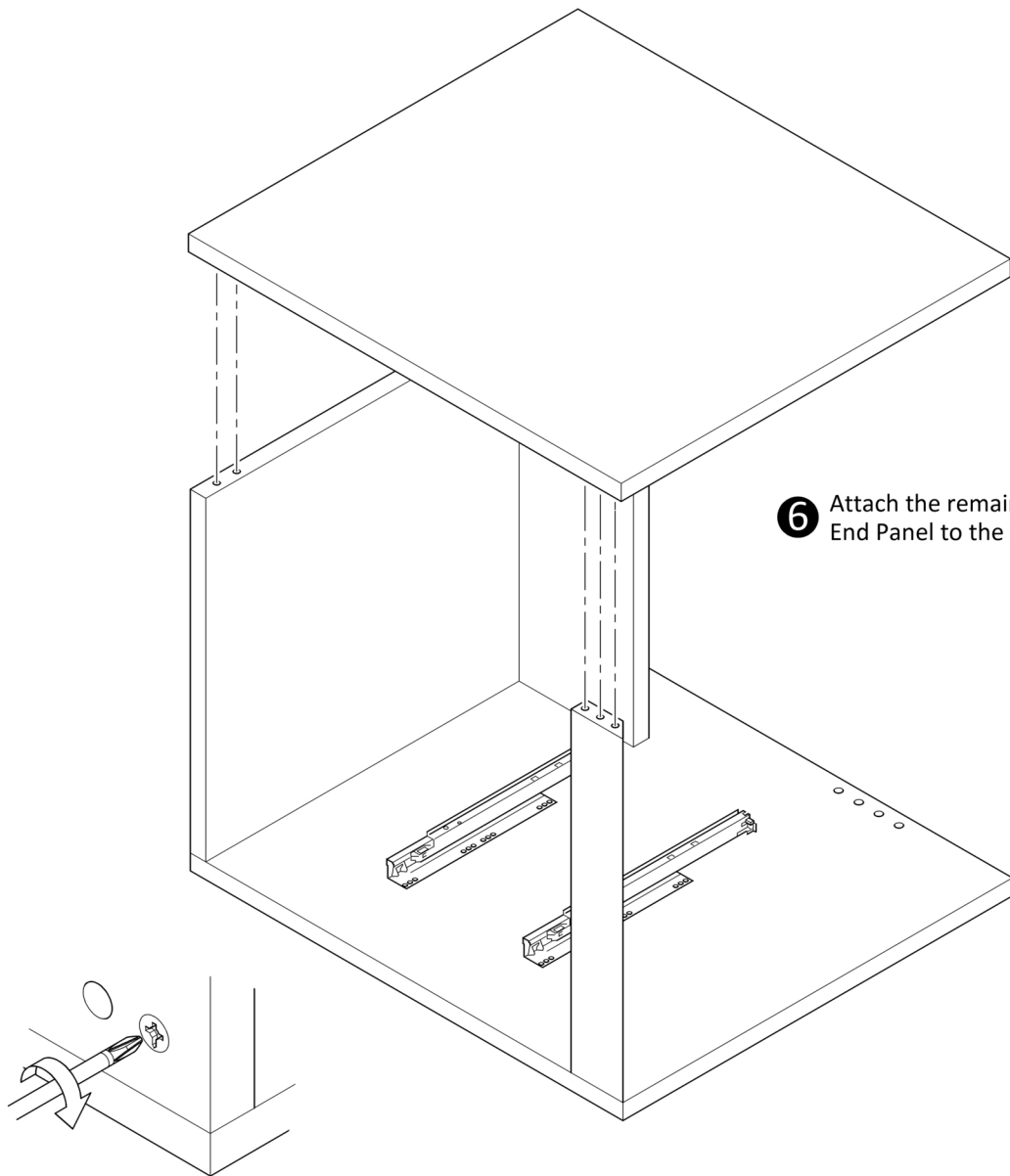
Vermont Wall Mounted Vanity
(2 Drawer)



Tools Required

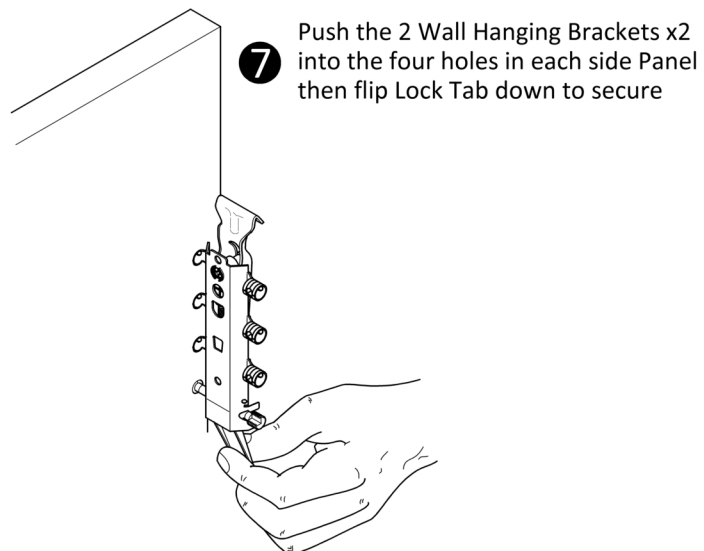




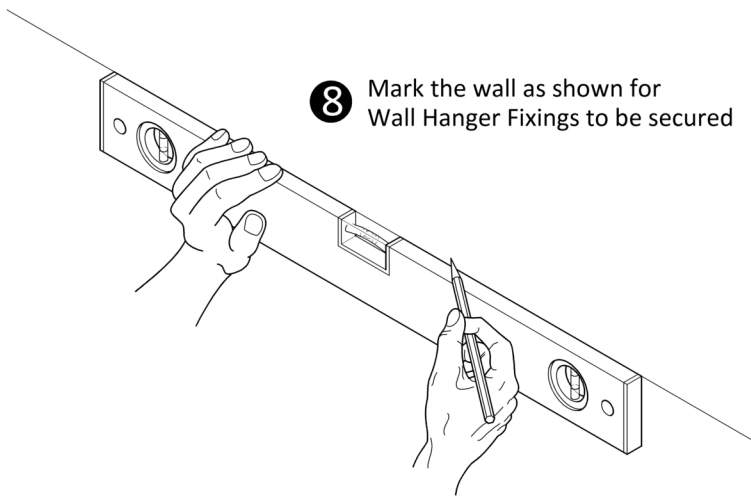


6 Attach the remaining End Panel to the assembly

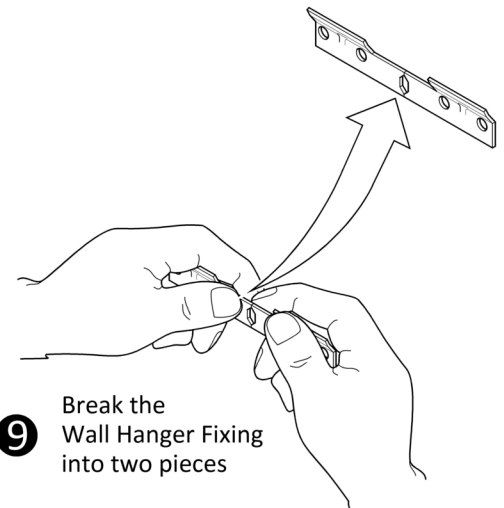
Rotate Cam Locks
180° clockwise



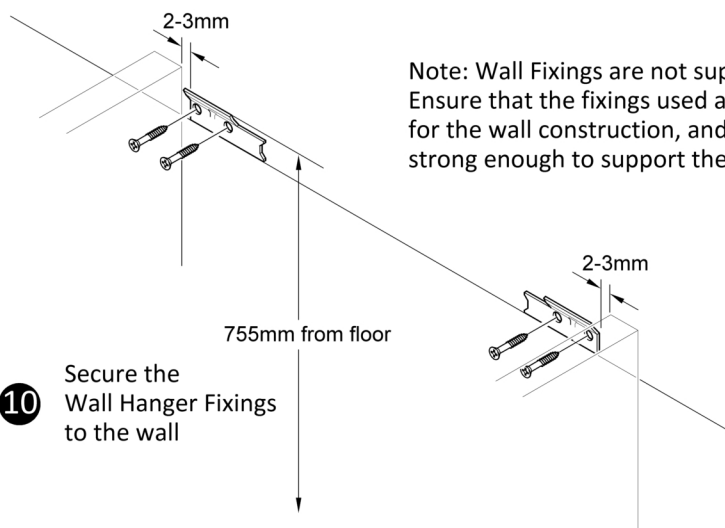
7 Push the 2 Wall Hanging Brackets x2 into the four holes in each side Panel then flip Lock Tab down to secure



- 8** Mark the wall as shown for Wall Hanger Fixings to be secured

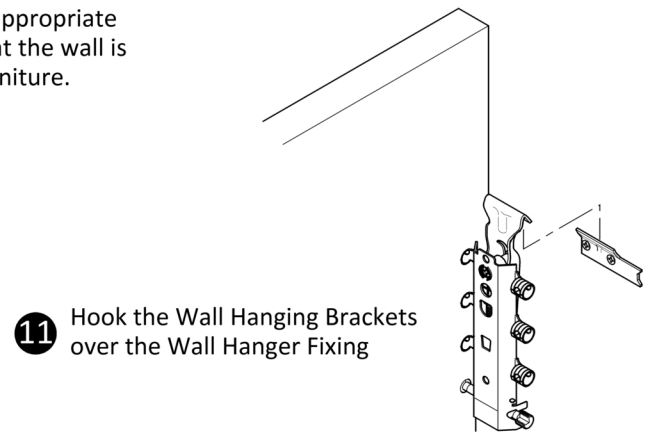


- 9** Break the Wall Hanger Fixing into two pieces

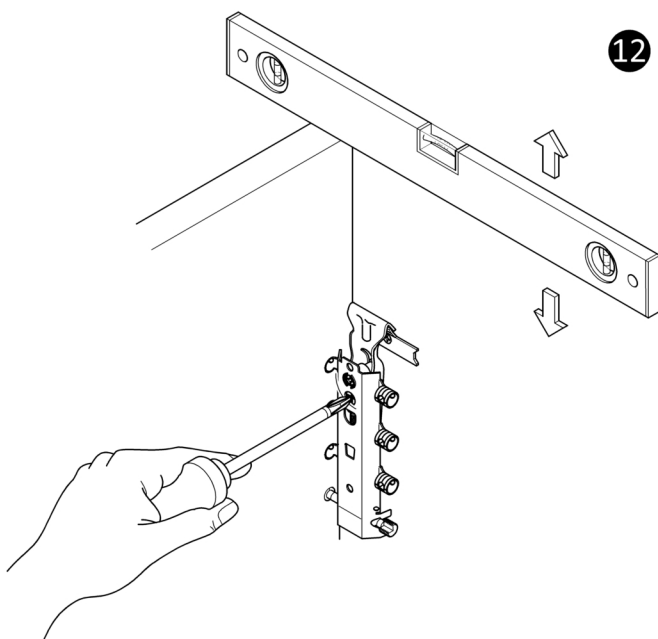


Note: Wall Fixings are not supplied.
Ensure that the fixings used are appropriate
for the wall construction, and that the wall is
strong enough to support the furniture.

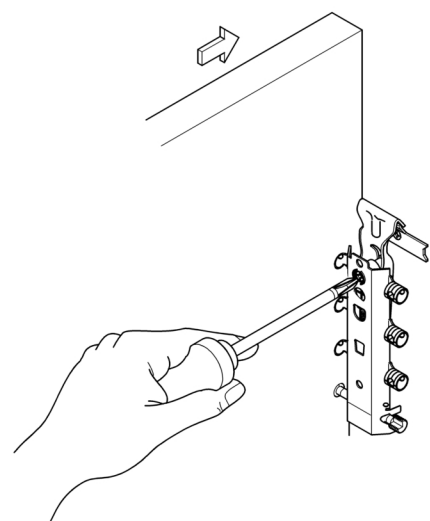
- 10** Secure the Wall Hanger Fixings to the wall

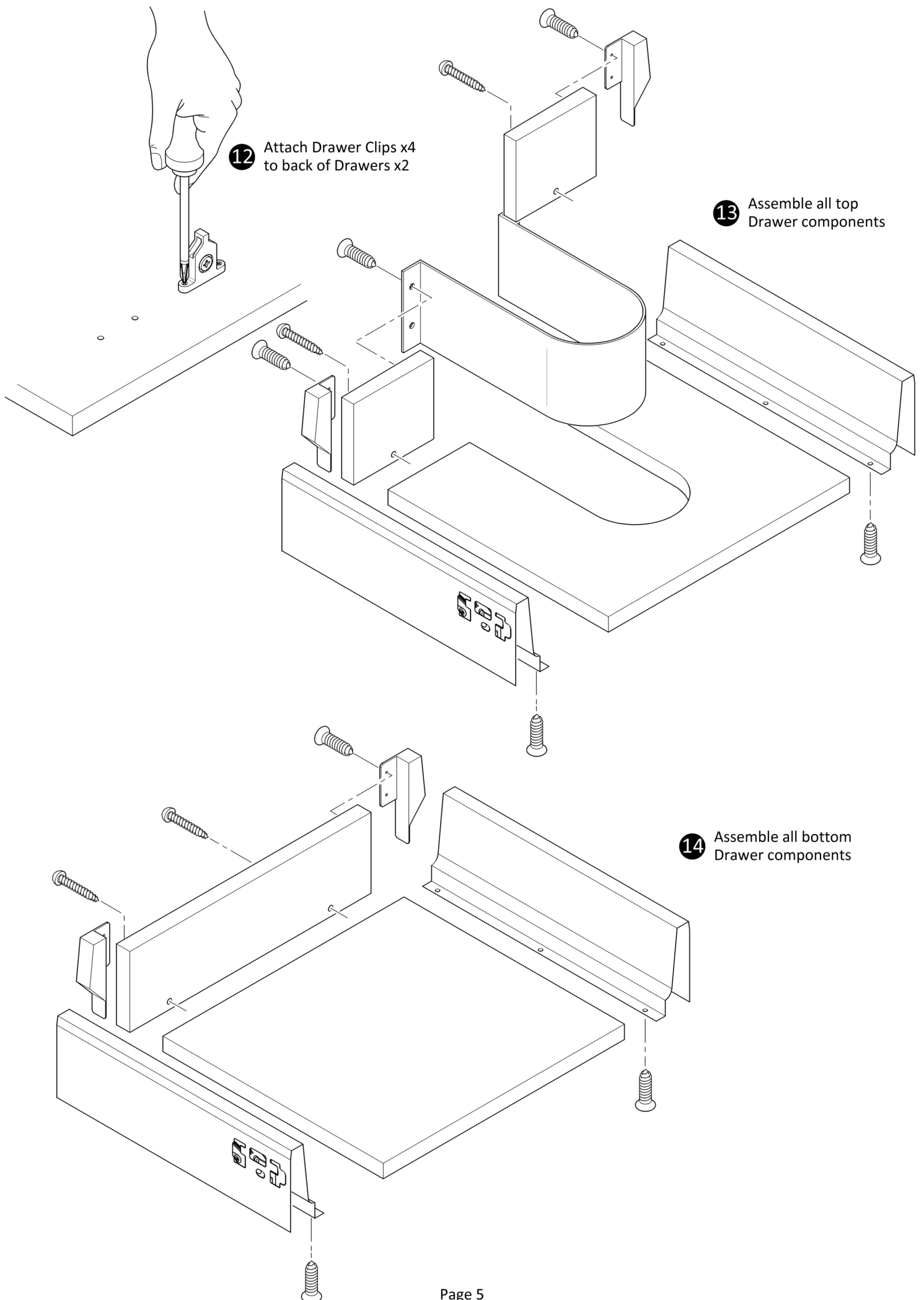


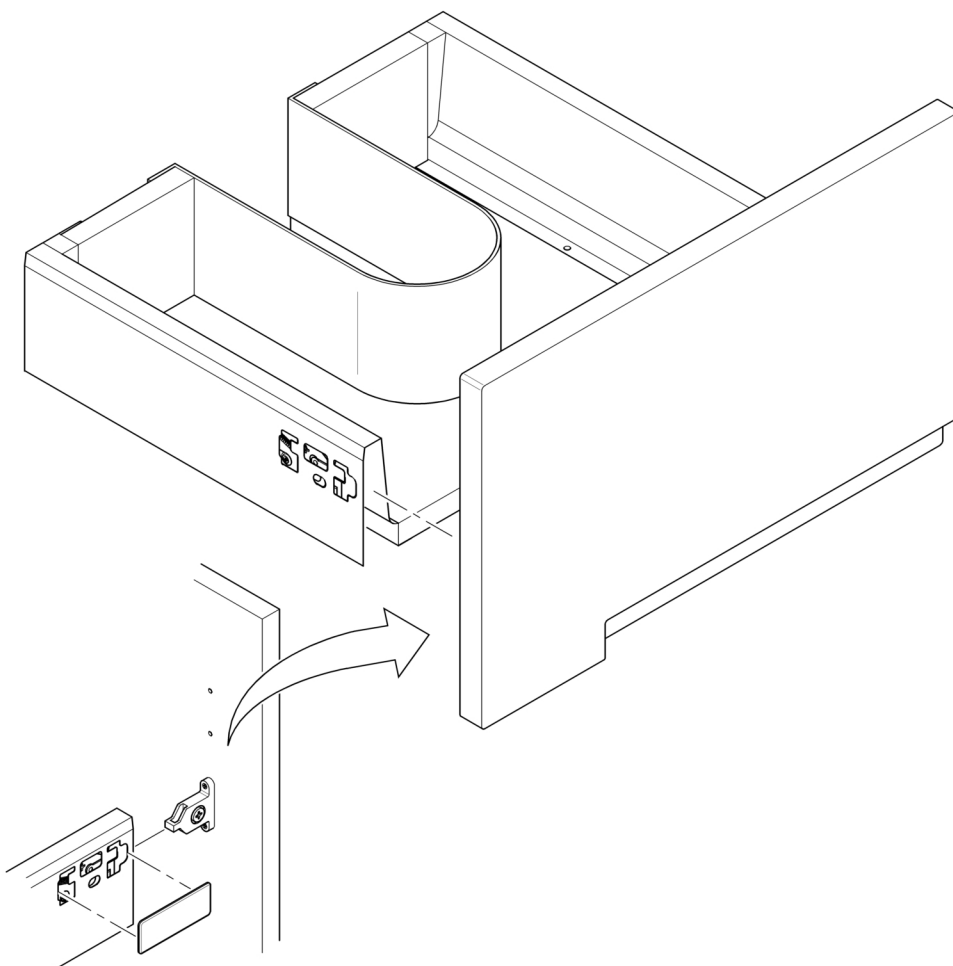
- 11** Hook the Wall Hanging Brackets over the Wall Hanger Fixing



- 12** Adjust Vanity Unit as required



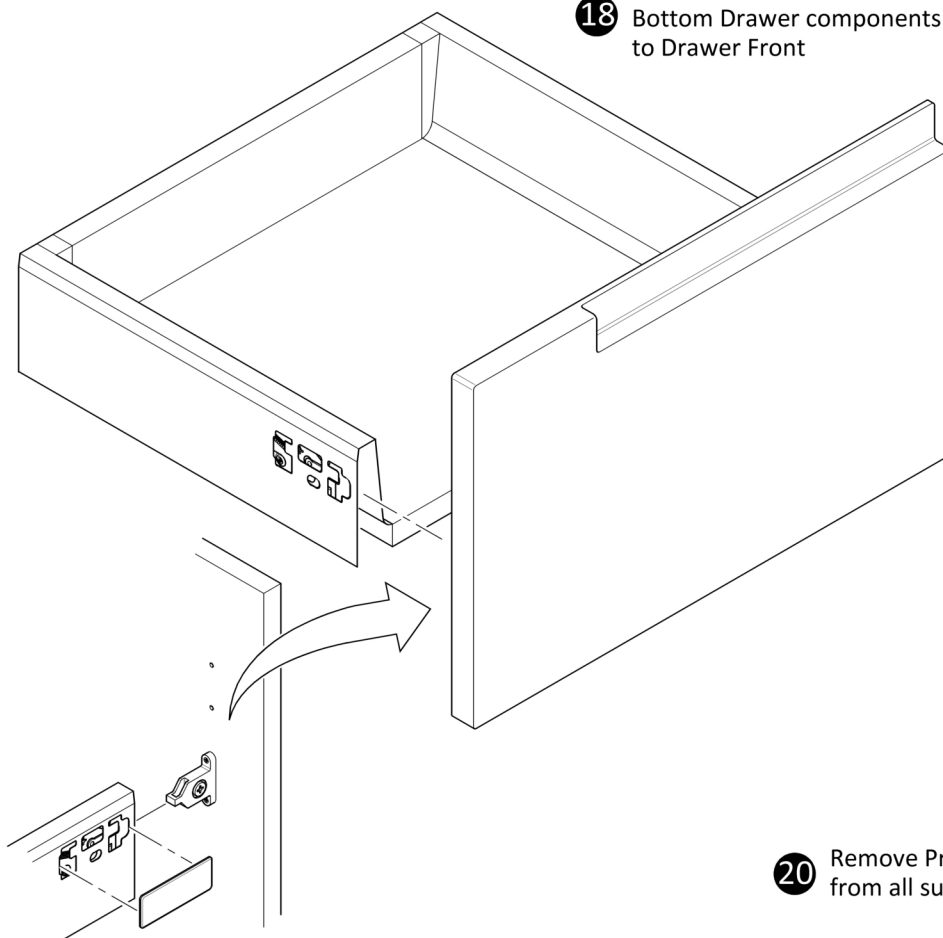




- 16** Attach assembled Top Drawer components to Drawer Front

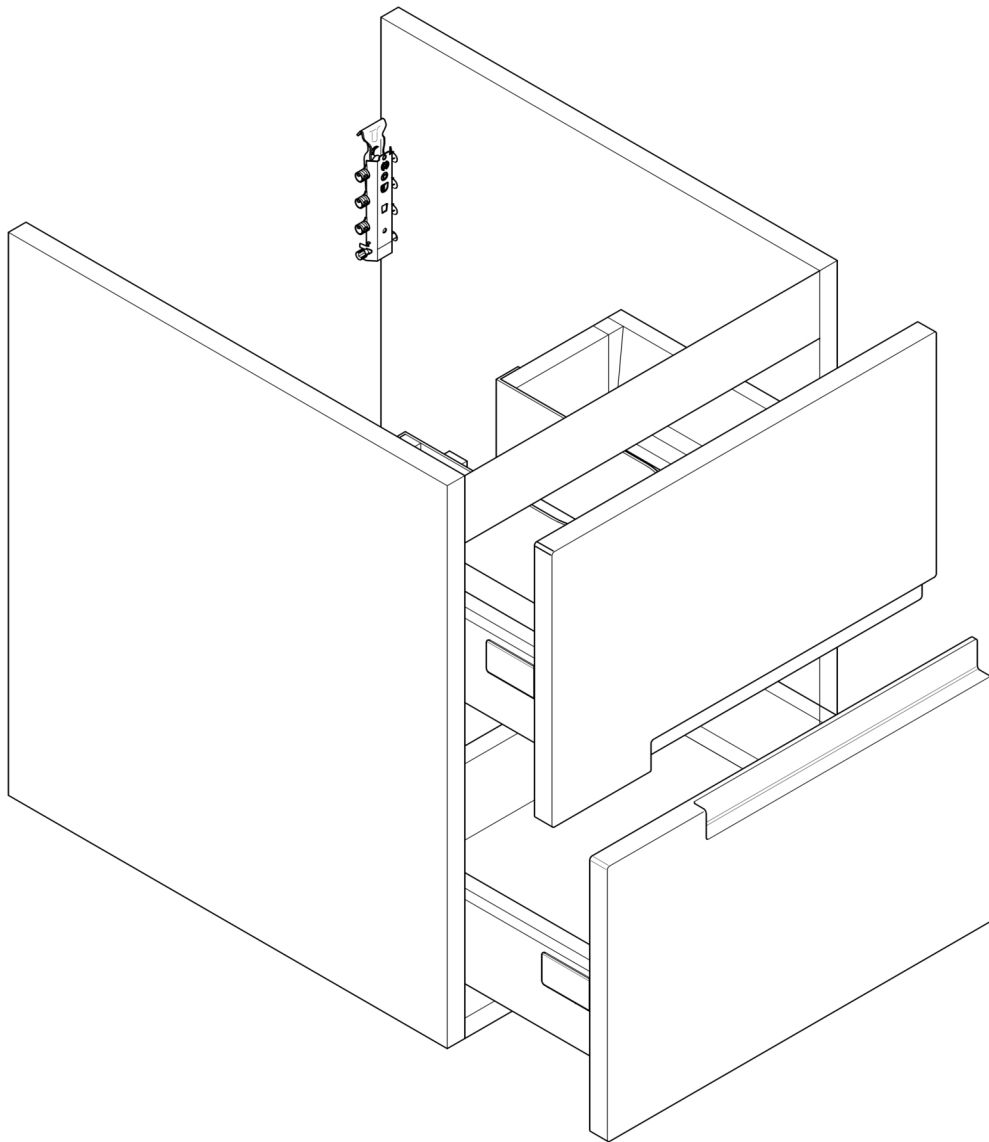
- 17** When Drawer is assembled push Plastic Cover x2 into position

- 18** Attach assembled Bottom Drawer components to Drawer Front



- 20** Remove Protective Coating from all surfaces

- 19** When Drawer is assembled push Plastic Cover x2 into position



Care and Maintenance

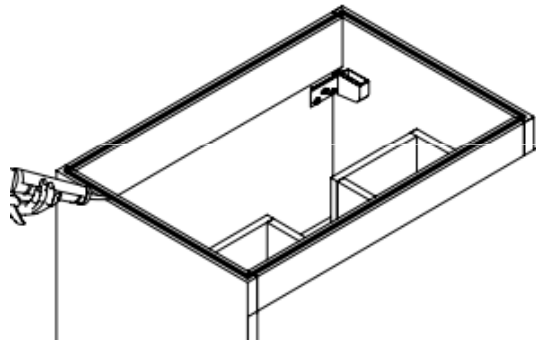
Please Leave with the householder

This furniture is made of wood, and has a water resistant finish. It should not be left wet. The quality of the finish is best maintained if it is wiped with a dry cloth after use. It should only be cleaned using a soft damp cloth followed by a dry cloth. Do not use bleach or any abrasive cleaner.

Polymarble Basins

Installation:

When installing on furniture apply a bead of silicone around the top of the furniture to hold the basin in position and to prevent water collecting between the basin and the cabinet. If water is allowed to collect between the basin and the cabinet it can cause damage to the furniture panels.



Care and maintenance:

To clean your polymarble basin only use a mild detergent. Do not use abrasive cleaners or chemicals as these can damage the surface.